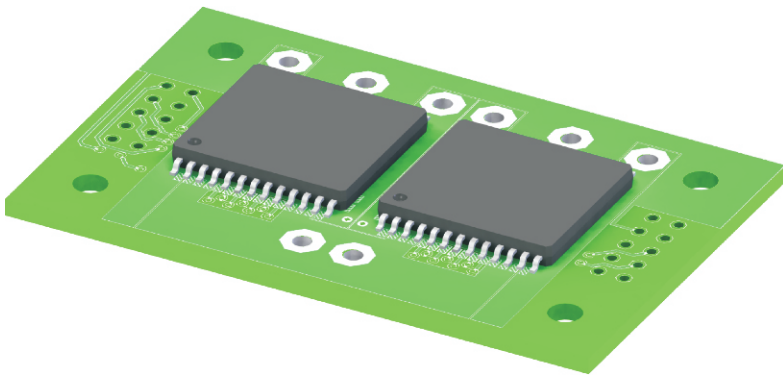


A small electronic module designed to control the direction of low voltage DC motors . Available as a bare board or in an enclosure. Wired or unwired. Available with a terminal strip for easy wiring. Each unit can control 2 motors.



Common Applications

- DC motor reversing.
- DC linear actuator reversing
- Speed control via external PWM signal

Mechanical:	Min.	Typ.	Max	Units	Comments
Board					
Length		28		mm	
Width		38		mm	
Height		10		mm	
Enclosure					
Length		141		mm	EN-01 Enclosure
Width		90		mm	
Height		35		mm	
Electrical:	Min.	Typ.	Max	Units	Comments
Control Voltage		5.0		VDC	
Sw itching Current			30	A	
Environmental:	Min.	Typ.	Max	Units	Comments
Operating Temperature	-20		60	Deg. C	
IP Rating		40		IP	In standard enclosure (IP 65 available)

10 953 Laval Cr. Kamloops BC V2C 5P4
 800 Fifth Ave. # 101-507 Seattle WA 98104
 Ph. (877) 377-1117 Fax (877) 377-4036
www.controlgrips.com