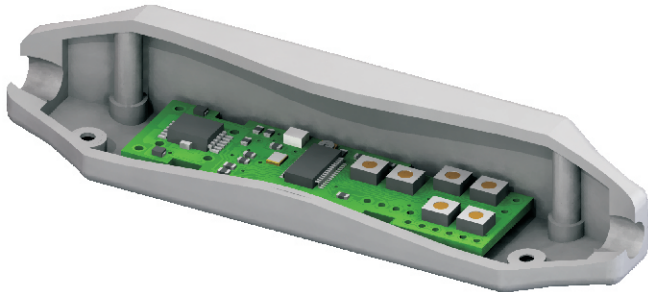
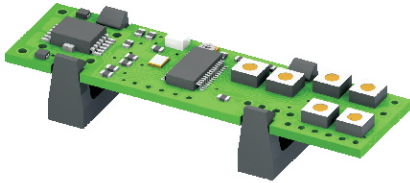


A small programmable multi-use controller board with digital and analog inputs and digital outputs. Available as a bare board or in an enclosure. Various programs available, both “stock” and custom. Wired or unwired. Fits inside our L, S, H, and O series grips.



## Common Applications

- PWM proportional valve control
- PWM valve soft start
- Custom logic for button presses
- Maintained functions from momentary switches
- Timed functions from momentary switches

| Mechanical:               | Min.    | Typ. | Max    | Units  | Comments                                |
|---------------------------|---------|------|--------|--------|---|
| Board                     |         |      |        |        |   |
| Length                    |         | 67   |        | mm     |   |
| Width                     |         | 18   |        | mm     |   |
| Height                    |         | 6    |        | mm     |   |
| Enclosure                 |         |      |        |        |   |
| Length                    |         | 114  |        | mm     |   |
| Width                     |         | 25   |        | mm     |   |
| Height                    |         | 23   |        | mm     |   |
|                           |         |      |        |        |   |
|                           |         |      |        |        |   |
| Electrical:               | Min.    | Typ. | Max    | Units  | Comments                                |
| Operating Voltage         | 9       |      | 30     | VDC    |   |
| Digital Inputs (12 Total) | 0 (Off) |      | 5 (On) | VDC    |   |
| Analog Inputs (6 Total)   | 0       |      | 5      | VDC    |   |
| Digital Outputs (4 Total) |         |      | 4      | Amps   | At supply voltage                       |
|                           |         |      |        |        |   |
|                           |         |      |        |        |   |
|                           |         |      |        |        |   |
|                           |         |      |        |        |   |
|                           |         |      |        |        |   |
| Environmental:            | Min.    | Typ. | Max    | Units  | Comments                                |
| Operating Temperature     | -20     |      | 60     | Deg. C |   |
| IP Rating                 |         | 40   |        | IP     | In standard enclosure (IP 65 available) |
|                           |         |      |        |        |   |
|                           |         |      |        |        |   |

#10 953 Laval Cr. Kamloops BC V2C 5P4  
 800 Fifth Ave. #101-507 Seattle WA 98104  
 Ph. (877) 377-1117 Fax (877) 377-4036  
[www.controlgrips.com](http://www.controlgrips.com)