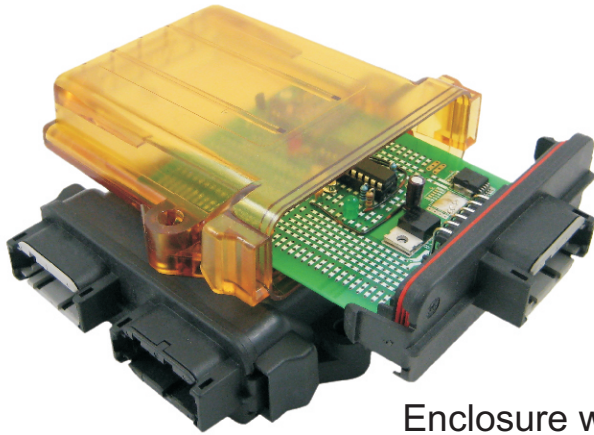
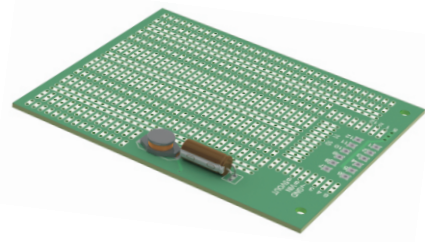


IP 68 rated enclosures in various configurations. Black or clear, vented or non-vented, end caps with 0, 1 or 2 molded in connectors. We also offer custom printed circuit boards and a universal “bread board” style that can be used for prototyping or short run production.

Universal prototyping board



Enclosure with custom circuit board

<b>Mechanical:</b>	Min.	Typ.	Max	Units	Comments
Length		133		mm	
Width		119		mm	
Height		36		mm	
<b>Electrical:</b>	Min.	Typ.	Max	Units	Comments
PCB Width		83		mm	
PCB Length		102		mm	
<b>Environmental:</b>	Min.	Typ.	Max	Units	Comments
Operating Temperature	-40		60	Deg. C	
IP Rating		68		IP	Non Vented Version

# 10 953 Laval Cr. Kamloops BC V2C 5P4  
 800 Fifth Ave. # 101-507 Seattle WA 98104  
 Ph. (877) 377-1117 Fax (877) 377-4036  
[www.controlgrips.com](http://www.controlgrips.com)