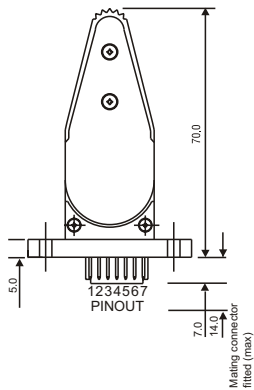
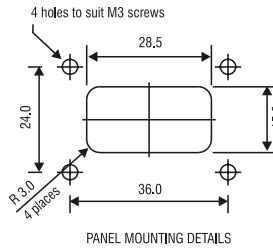
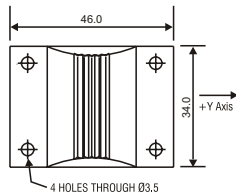
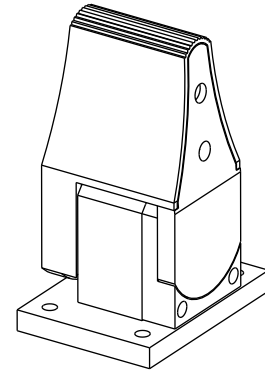
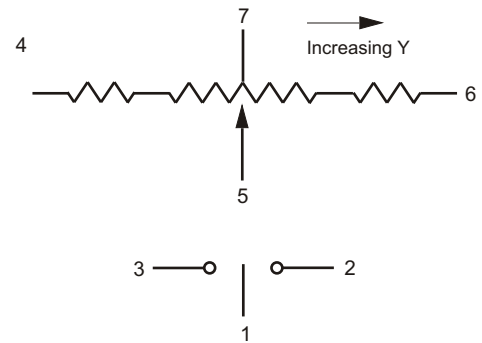


Description: Single axis, proportional output joystick.  
Features center tapped potentiometer and on/off directional switch.



Pinout :

- 1 : Switch Common
- 2 : Switch N.O. (-Y)
- 3 : Switch N.O. (+Y)
- 4 : Potentiometer -Y
- 5 : Potentiometer Wiper
- 6 : Potentiometer +Y
- 7 : Potentiometer Center Tap



Mechanical:	Min.	Typ.	Max	Units	Comments
Height		65		mm	Above Panel
Length		46		mm	
Width		34		mm	
Mechanical Angle		+/-29		Degrees	
Operating Life		>5		Million	Cycles
Electrical:	Min.	Typ.	Max	Units	Comments
Potentiometer					
Resistance	4000	5000	6000	Ohms	
Power Rating		0.25		Watts	
Supply Voltage		5	35	VDC	
Supply Current		5		mA	
Output Voltage	0.1		0.9		Of supply voltage
Center Tap Voltage	0.48	0.5	0.52		Of supply voltage
Electrical Angle		+/-28		Degrees	
Switch					
Current			2	mA	
Activation Point		+/-5		Degrees	From center
Environmental:	Min.	Typ.	Max	Units	Comments
Operating Temp.	-25		70	°C	
IP Rating		IP66			Above Panel

#10 953 Laval Cr. Kamloops BC V2C 5P4  
800 Fifth Ave. #101-507 Seattle WA 98104  
Ph. (877) 377-1117 Fax (877) 377-4036  
www.controlgrips.com