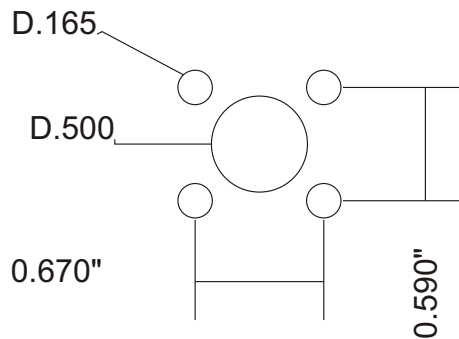


Description: The RK-1PR is a Hall Effect voltage output proportional rocker module. The unit is a self contained device that can be panel mounted in many faceplate locations of our L, X, S, O, or H grips, or any customer specified panel mount application. The rocker has a spring return to center feature for full single axis control. Small size, easy mounting and long operating life make the RK-1PR assembly an excellent choice for anywhere a rocker based variable speed control is needed.

Mounting Pattern



<b>Mechanical:</b>	Min.	Typ.	Max	Units	Comments
Width		20.6		mm	Including bezel
Length		27		mm	Including bezel
Depth		20		mm	Below panel
Switch Stroke		+/- 30		degrees	From center
Operating Life		>5		Million	Cycles
<b>Electrical:</b>	Min.	Typ.	Max	Units	Comments
Supply Voltage	4.75	5.0	5.25	VDC	
Supply Current		15		mA	
Output Voltage Span	0.5	2.5	4.5	VDC	Spring return to center
<b>Environmental:</b>	Min.	Typ.	Max	Units	Comments
Operating Temp.	-25		70	°C	
IP Rating		IP67			Above Panel

# 10 953 Laval Cr. Kamloops BC V2C 5P4  
 800 Fifth Ave. # 101-507 Seattle WA 98104  
 Ph. (877) 377-1117 Fax (877) 377-4036  
[www.controlgrips.com](http://www.controlgrips.com)