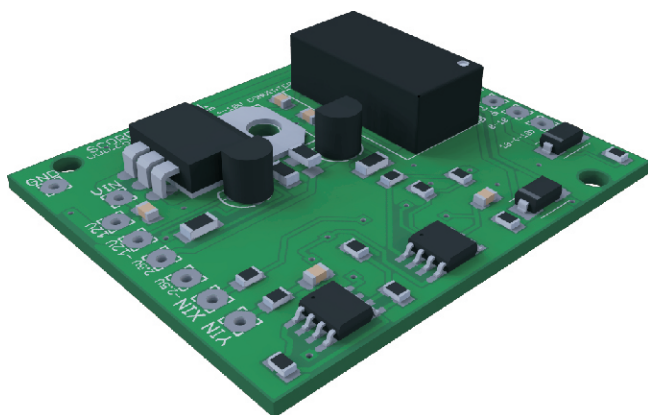


A small electronic module that takes a 0 to 5 VDC input (like our Hall Effect joysticks) and converts it to a -10 to +10 VDC output. This is a dual input device that will convert both axes of an X-Y joystick. Several auxiliary reference outputs are also available. Available as a bare board or in an enclosure.



Mechanical:	Min.	Typ.	Max	Units	Comments
Board					
Length		51		mm	
Width		51		mm	
Height		9		mm	
Enclosure					Enclosure EN-01
Length		64		mm	
Width		82		mm	
Height		30		mm	
Electrical:	Min.	Typ.	Max	Units	Comments
Voltage	12		30	VDC	
Output Voltage	-10		10	VDC	2 channels
	-10	0			2 channels
		0	10		2 channels
Output Current			10	mA	
Auxiliary Outputs			-12	VDC	Reference
			12	VDC	Reference
			5	VDC	For joystick supply
Environmental:	Min.	Typ.	Max	Units	Comments
Operating Temperature	-20		60	Deg. C	
IP Rating		52		IP	In standard enclosure (IP 65 available)

#10 953 Laval Cr. Kamloops BC V2C 5P4
800 Fifth Ave. #101-507 Seattle WA 98104
Ph. (877) 377-1117 Fax (877) 377-4036
www.controlgrips.com